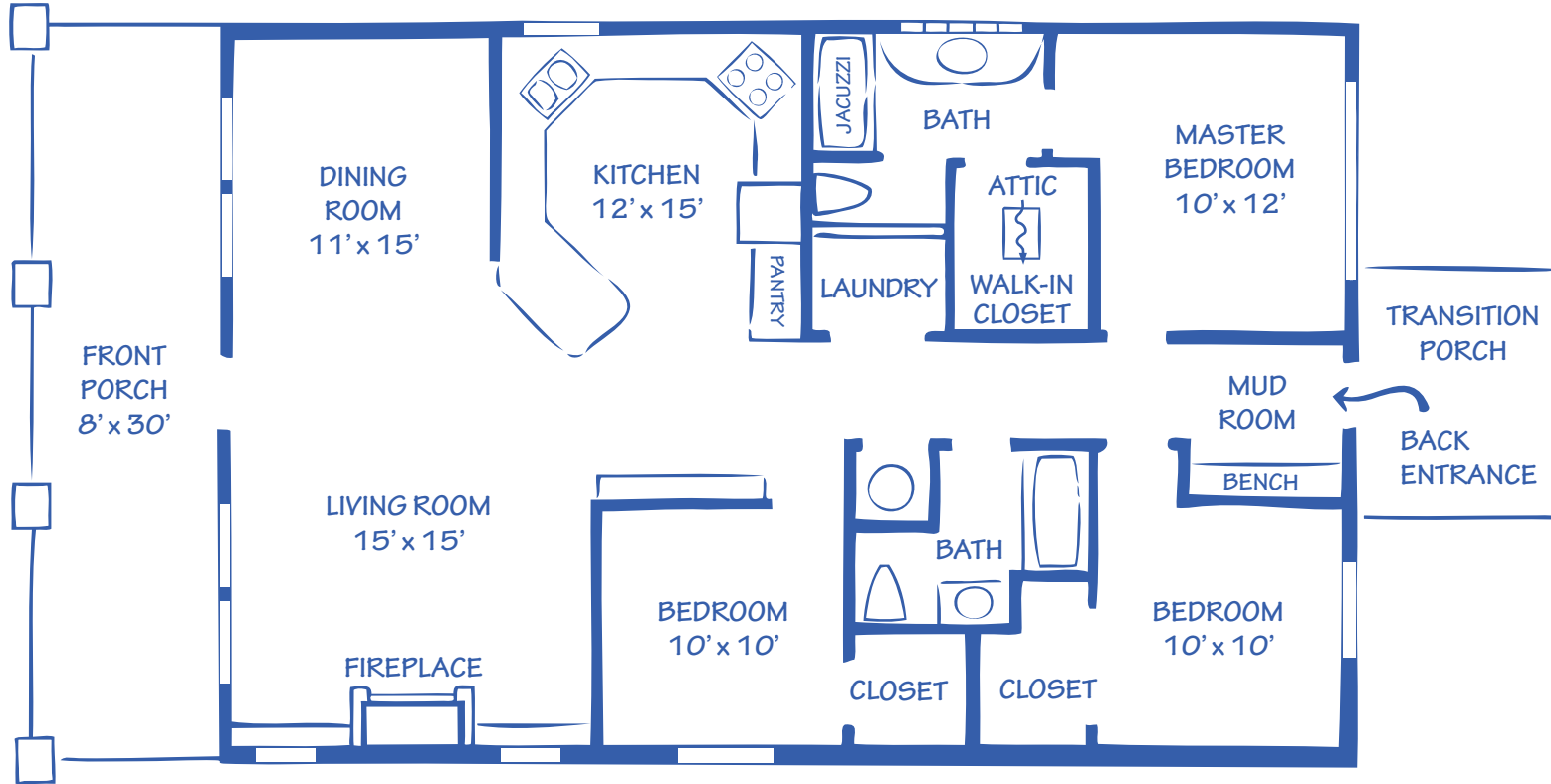


THE ROCKHURST

1,389 SQ. FEET



126 GRANITE RIDGE CIRCLE
3 bedroom, 2 bath

Framed by extensive cobblestone walls, this distinctive home has metal dormers in the roof and matching garage and diamond windows with a very large front porch with columns and arches.

- Mahogany stained glass front door.
- The open living room dining room spans 30 feet and has a large fireplace on the West wall.
- The rich dark cherry woodwork is offset by the expansive white marble peninsula and light granite counter tops in the Kitchen. Stainless steel appliances.
- The Master Suite is on the South side and has a high long window with a charming Master Bathroom.
- The back entrance also has a mud room & storage bench.
- The curved cobblestone walls in the front yard would make a perfect waterscape or garden area and the home also includes more property behind the garage.
- 1 Year Builder Warranty & Buyer Orientation included.

Completed: May 15, 2008

Built by David McCoy, Certified Builder
Board Member, Lawton Home Builders Association
Member of National Home Builders Association

TITLE GRANITE RIDGE
MEDICINE PARK

DATE 2008

PLAN THE ROCKHURST

DESIGNER CANDACE McCOY

BUILDER DAVID McCOY