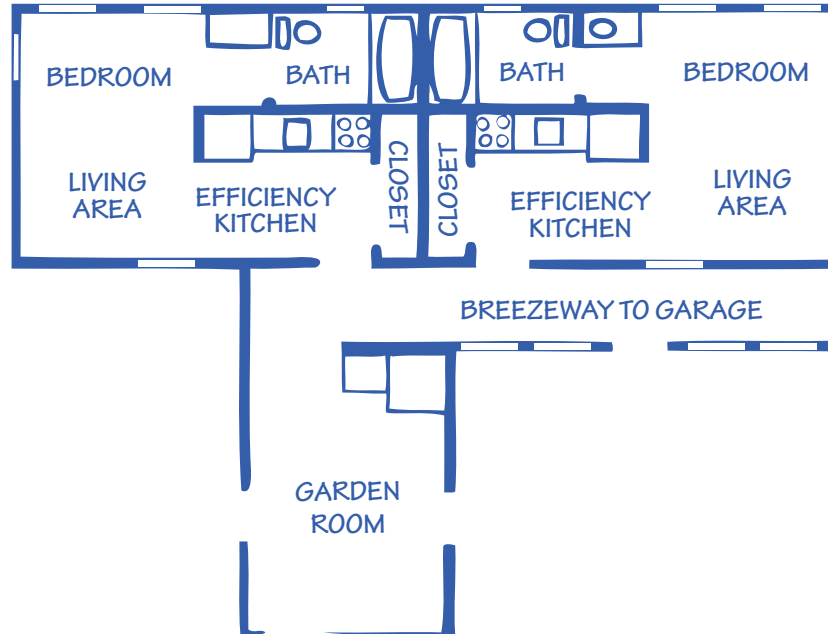
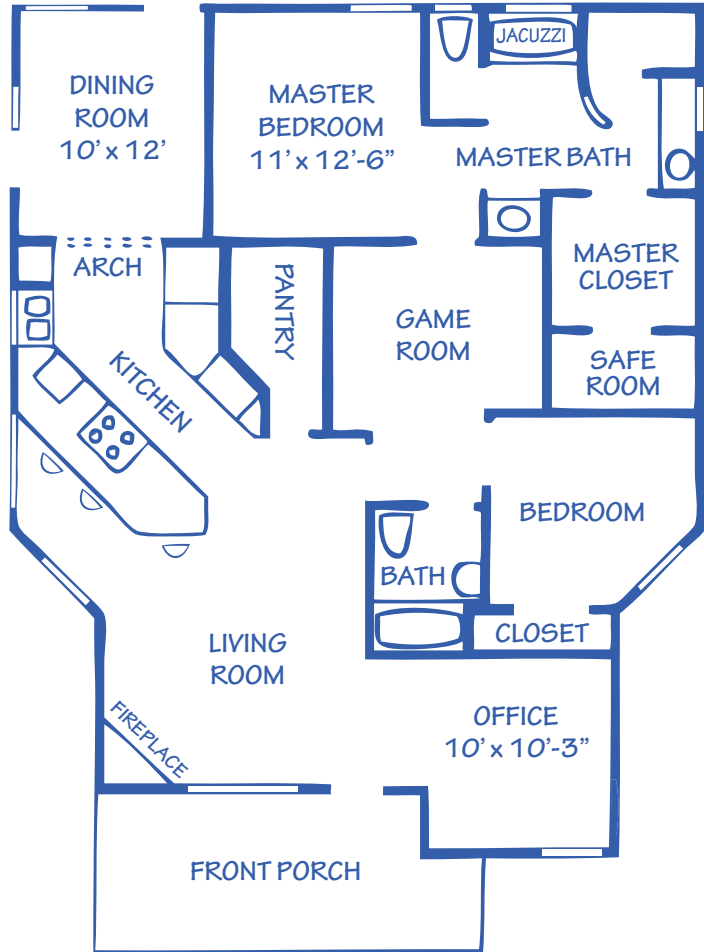


HARRISON PLACE

2,100 SQ. FEET - INCLUDES (2) 300 SQ. FT. APTS.



103 GRANITE RIDGE CIRCLE
2 bedroom, 2 bath, plus 2 Apartments

- 2100 square feet living area includes main house and two complete apartments with kitchens and separate full bath.
- Breathtaking view of the valley.
- Built up on expansive rock walls.
- Chef's delight of a kitchen with concrete countertops, bar, and stainless steel appliances flowing through to dining room with a view of Mount Scott.
- Separate garden and laundry rooms with terraces to both sides.
- Attached hallway connecting to a three car attached garage.
- Inviting front porch.
- Master suite has Jacuzzi and walk in glass block shower, two sinks.
- Walk in closet into safe room.
- Game room.
- Front Office and living room boasts beautiful wood work and corner fireplace.
- Mesquite wood and concrete stained floors.

SOLD
Built by David McCoy, Certified Builder
Board Member of Lawton Home Builders Association
Member of National Home Builders Association,

TITLE	GRANITE RIDGE MEDICINE PARK
DATE	2009
PLAN	HARRISON PLACE
DESIGNER	CANDACE McCOY
BUILDER	DAVID McCOY