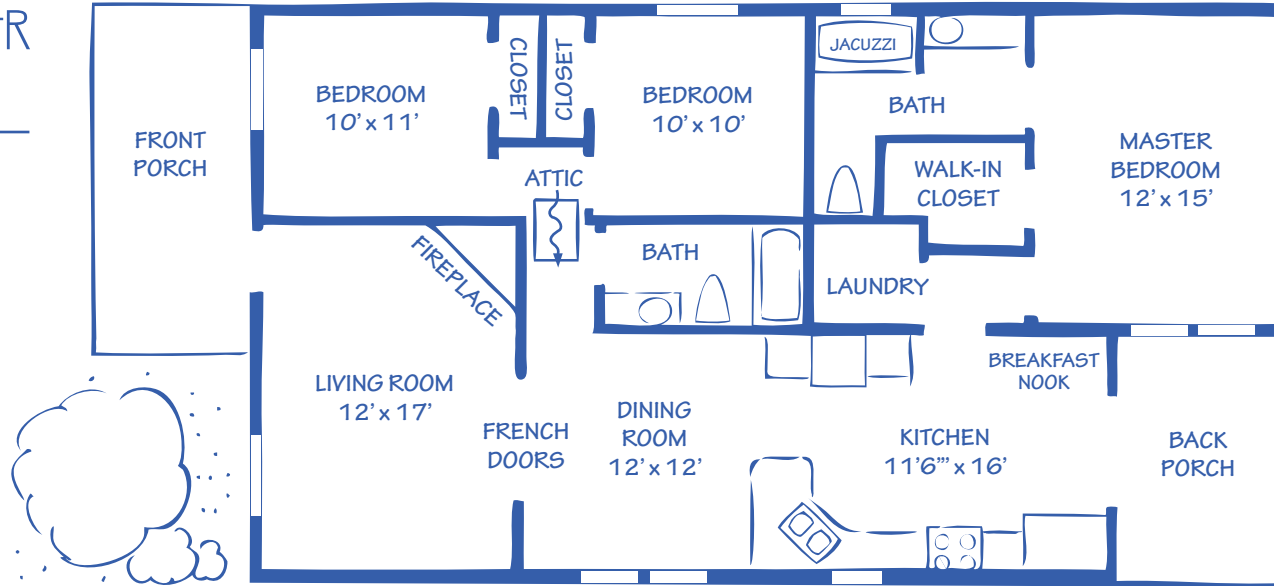


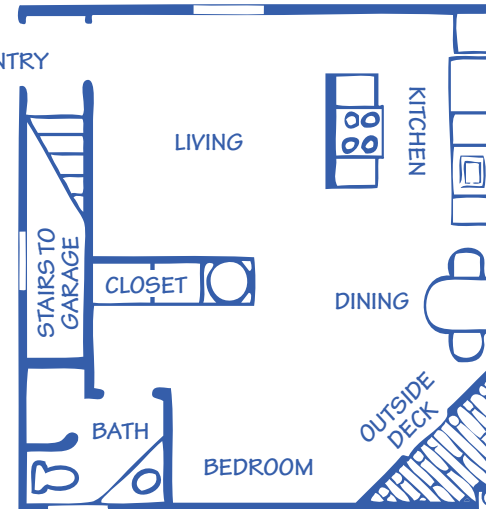
THE FISHER PLACE

1,304 SQ. FEET



GARAGE APARTMENT

526 SQ. FEET



121 GRANITE RIDGE CIRCLE
3 bedroom 2 Bath with Garage Apartment

Not only extremely livable and accessible for owner but well designed for office or over flow guests, Fisher Place has function surrounded by beauty.

- 1304 square feet designed around the function on the Master Suite, this home also features a "cat walk" bridge across to a 600 square foot apartment.
- The corner fireplace in the living room accompanies the leaded glass mahogany front door and the etched glass large French doors flowing through to dining room.
- The large kitchen has a planned work triangle.
- The front bedrooms are suitable for an office or study.
- The Master Suite has an adjacent laundry area.
- The floors, custom made onsite cabinetry.
- Classic "dog eared" shingles & custom made corbels.
- Backyard access to east section of soon to be completed walking nature trail.
- Includes 1 year Builder Warranty & Buyer Orientation.

Completed: May 1, 2008

Built by David McCoy, Certified Builder
Board Member of Lawton Home Builders Association
Member of National Home Builders Association

TITLE GRANITE RIDGE
MEDICINE PARK

DATE 2008

PLAN FISHER PLACE

DESIGNER CANDACE McCOY

BUILDER DAVID McCOY